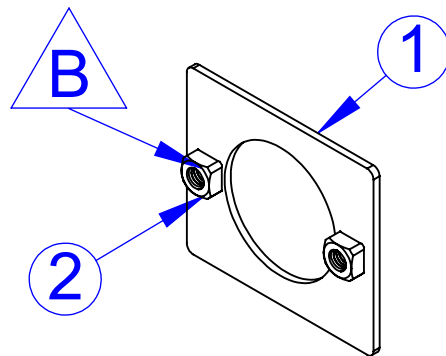
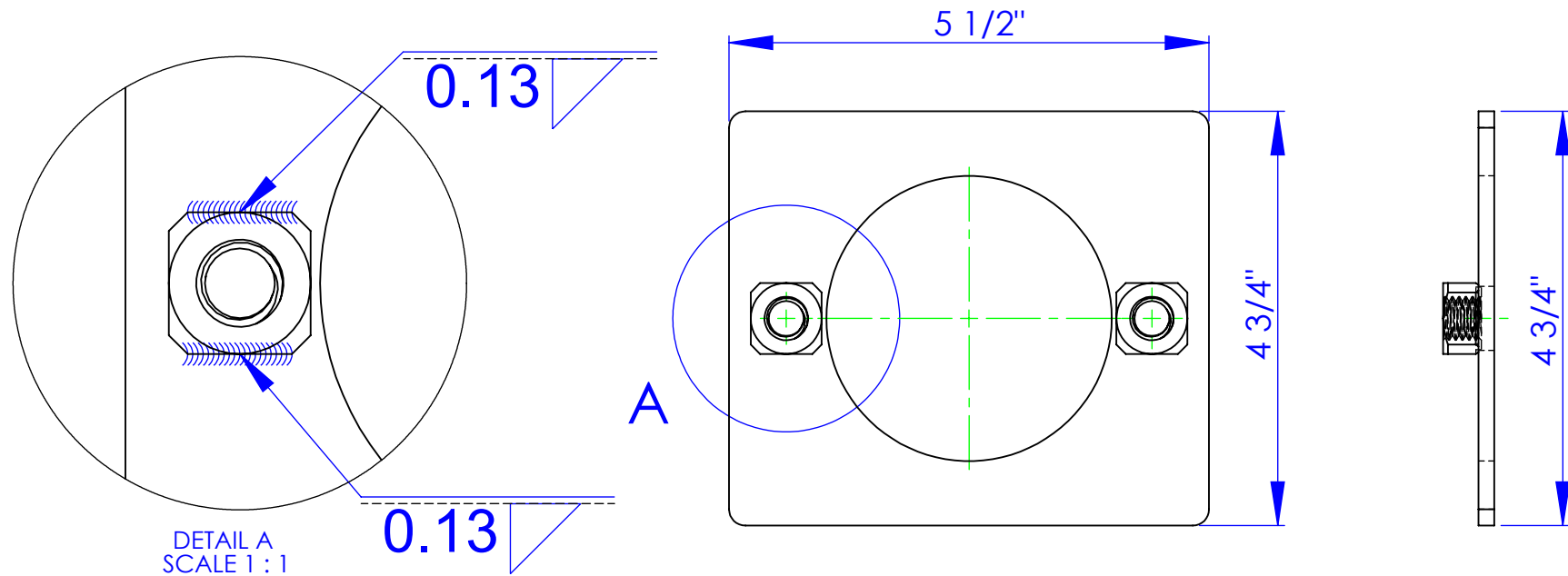


ITEM NO.	PART NUMBER	DESCRIPTION	MATERIAL	QTY.
1	FP-HF12-16	PLATE, MOTOR MOUNT, LAZER CUT, HF	7 ga HR	1
2	BO-1/2 SQW NUT	SQUARE WELD ON NUT 1/2-13		2

	REVISION	
REV.	DESCRIPTION	DATE
B	REV. TO SQUARE WELD NUTS	11/4/2011



PROPRIETARY AND CONFIDENTIAL
THE INFORMATION CONTAINED IN THIS
DRAWING IS THE SOLE PROPERTY OF TRIPLE
C INC. ANY REPRODUCTION IN PART OR
AS A WHOLE WITHOUT THE WRITTEN
PERMISSION OF TRIPLE C INC. IS PROHIBITED.

DIMENSIONS ARE IN INCHES
TOLERANCES:
FRACTIONAL $\pm 1/16$
ANGULAR: MACH ± 1 BEND \pm
TWO PLACE DECIMAL ± 010
THREE PLACE DECIMAL ± 005

MATERIAL ---
DO NOT SCALE DRAWING

	NAME	DATE
DRAWN	HEATH	11/4/11
PART #		
ASM #	HF-HF12-54	
COMMENTS:		
MOTOR MOUNT PLATE WELDMENT HF		

P.O. BOX 248,
SABETHA, KS 66534

TRIPLE C
INC.

SIZE	DWG. NO.	REV.
A	30-1204 B	B
SCALE:1:2	WEIGHT:	SHEET 1 OF 1